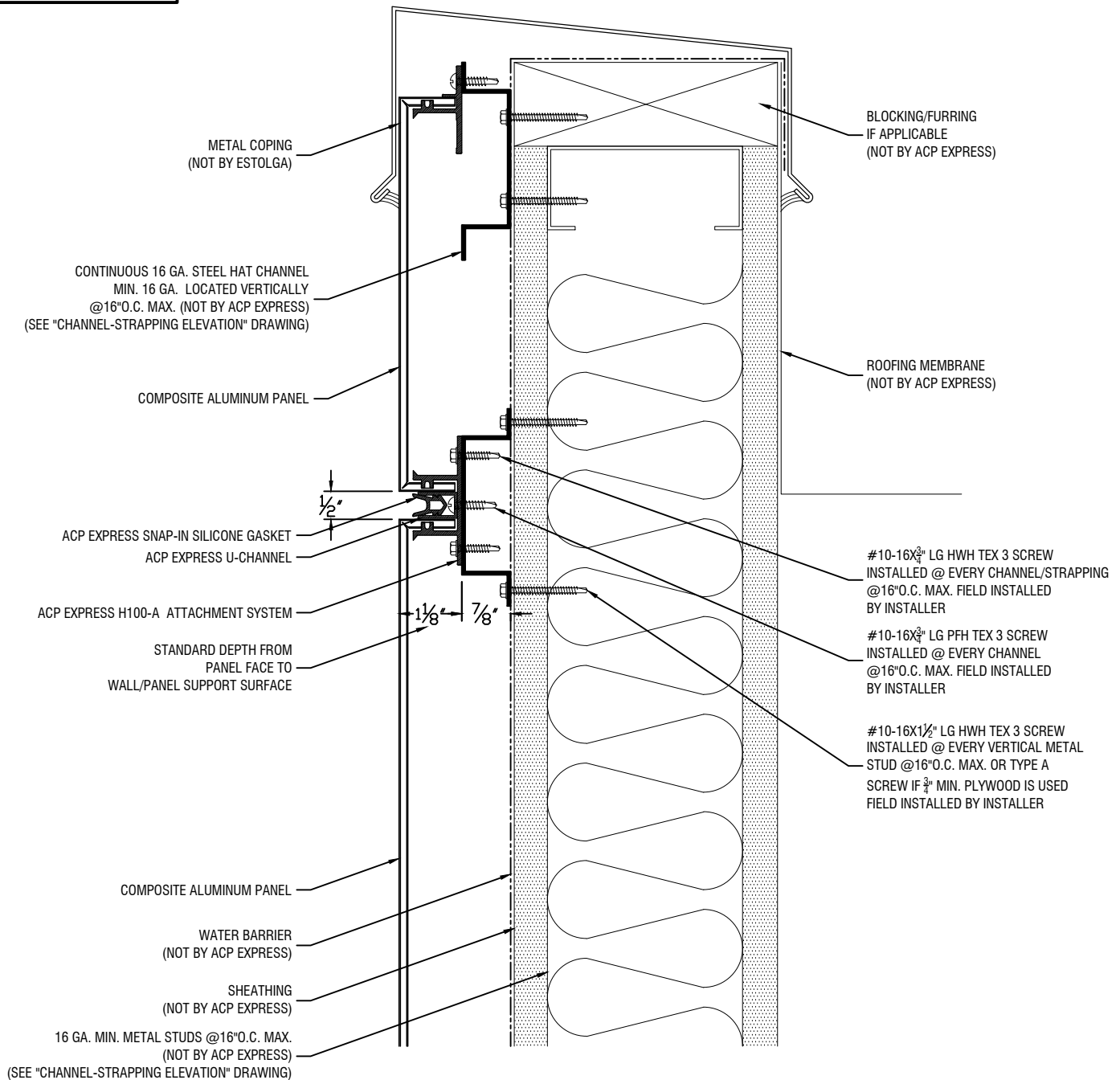


CONTRACTOR NOTE:
ALL WALLS ARE TO BE PLUMB
& LEVEL. INSTALLER TO USE
NECESSARY SHIMS IF WALLS
ARE NOT PLUMB OR LEVEL.
SHIMS (NOT BY ACP EXPRESS)



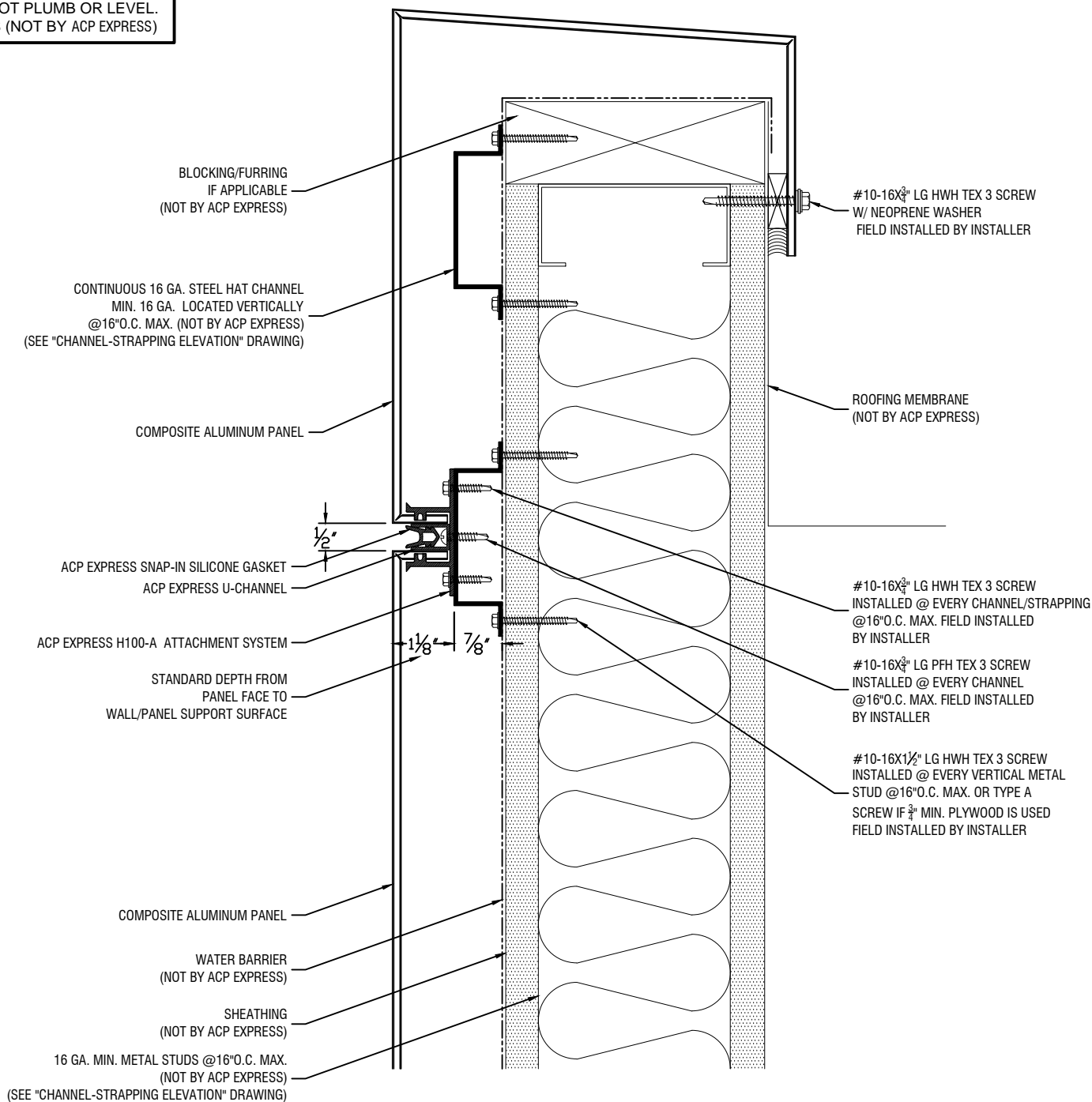
Coping Detail-1



ACP EXPRESS H100-A DRY SEAL SYSTEM (SYSTEM INSTALLED ON CONTINUOUS HAT CHANNEL)

TO PURCHASE ENGINEERED/FABRICATED PANEL SYSTEM, CONTACT ALLIED METAL (888) 520-8800
TO PURCHASE ENGINEERED ACP EXPRESS ATTACHMENT SYSTEM, CONTACT WRISCO (800) 753-9400
Product Patents: 8,925,271, 8,966,849. Patents pending

CONTRACTOR NOTE:
ALL WALLS ARE TO BE PLUMB
& LEVEL. INSTALLER TO USE
NECESSARY SHIMS IF WALLS
ARE NOT PLUMB OR LEVEL.
SHIMS (NOT BY ACP EXPRESS)



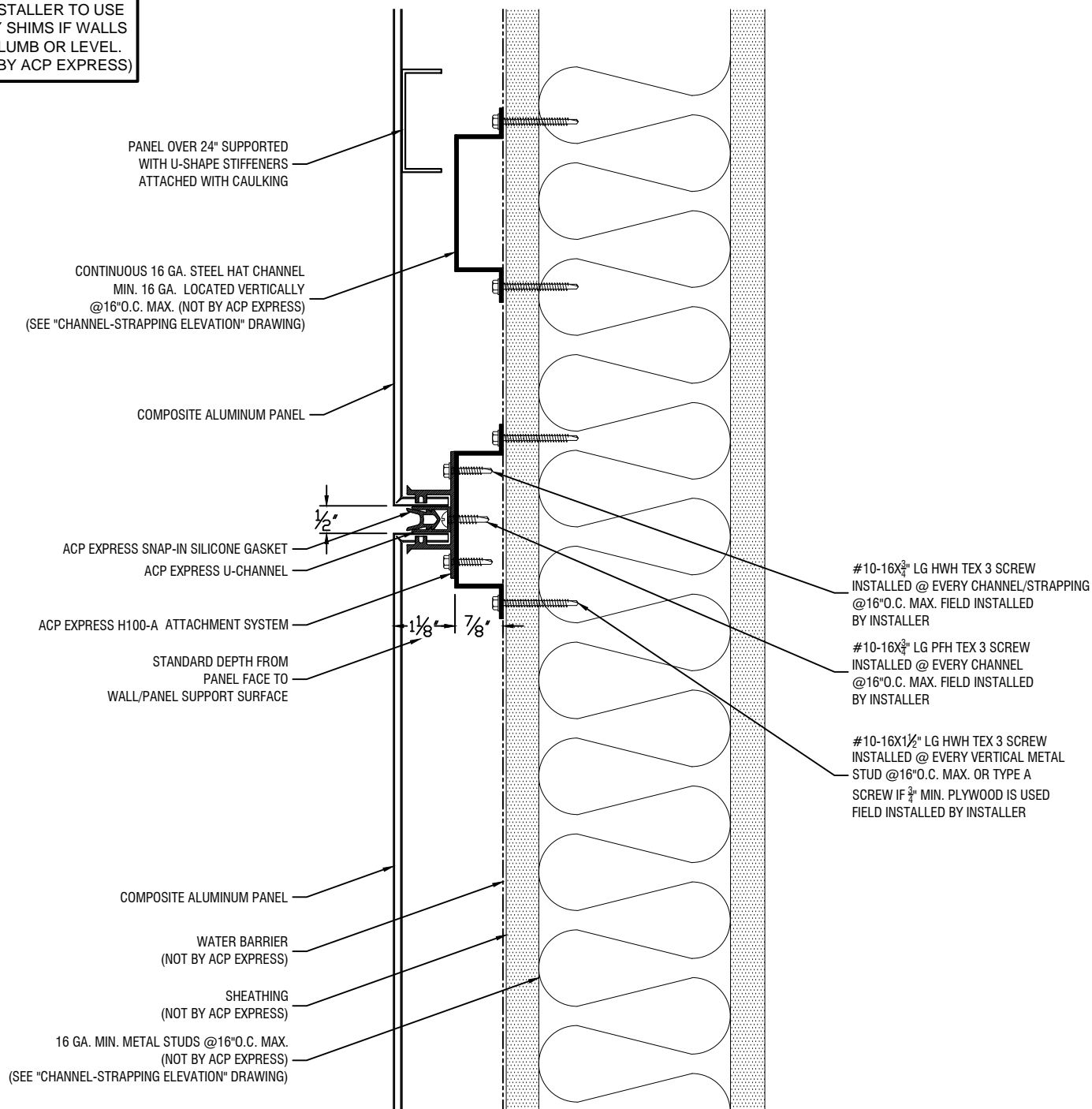
Coping Detail-2



ACP EXPRESS H100-A DRY SEAL SYSTEM **(SYSTEM INSTALLED ON CONTINUOUS HAT CHANNEL)**

TO PURCHASE ENGINEERED/FABRICATED PANEL SYSTEM, CONTACT ALLIED METAL (888) 520-8800
TO PURCHASE ENGINEERED ACP EXPRESS ATTACHMENT SYSTEM, CONTACT WRISCO (800) 753-9400
Product Patents: 8,925,271, 8,966,849. Patents pending

CONTRACTOR NOTE:
ALL WALLS ARE TO BE PLUMB
& LEVEL. INSTALLER TO USE
NECESSARY SHIMS IF WALLS
ARE NOT PLUMB OR LEVEL.
SHIMS (NOT BY ACP EXPRESS)



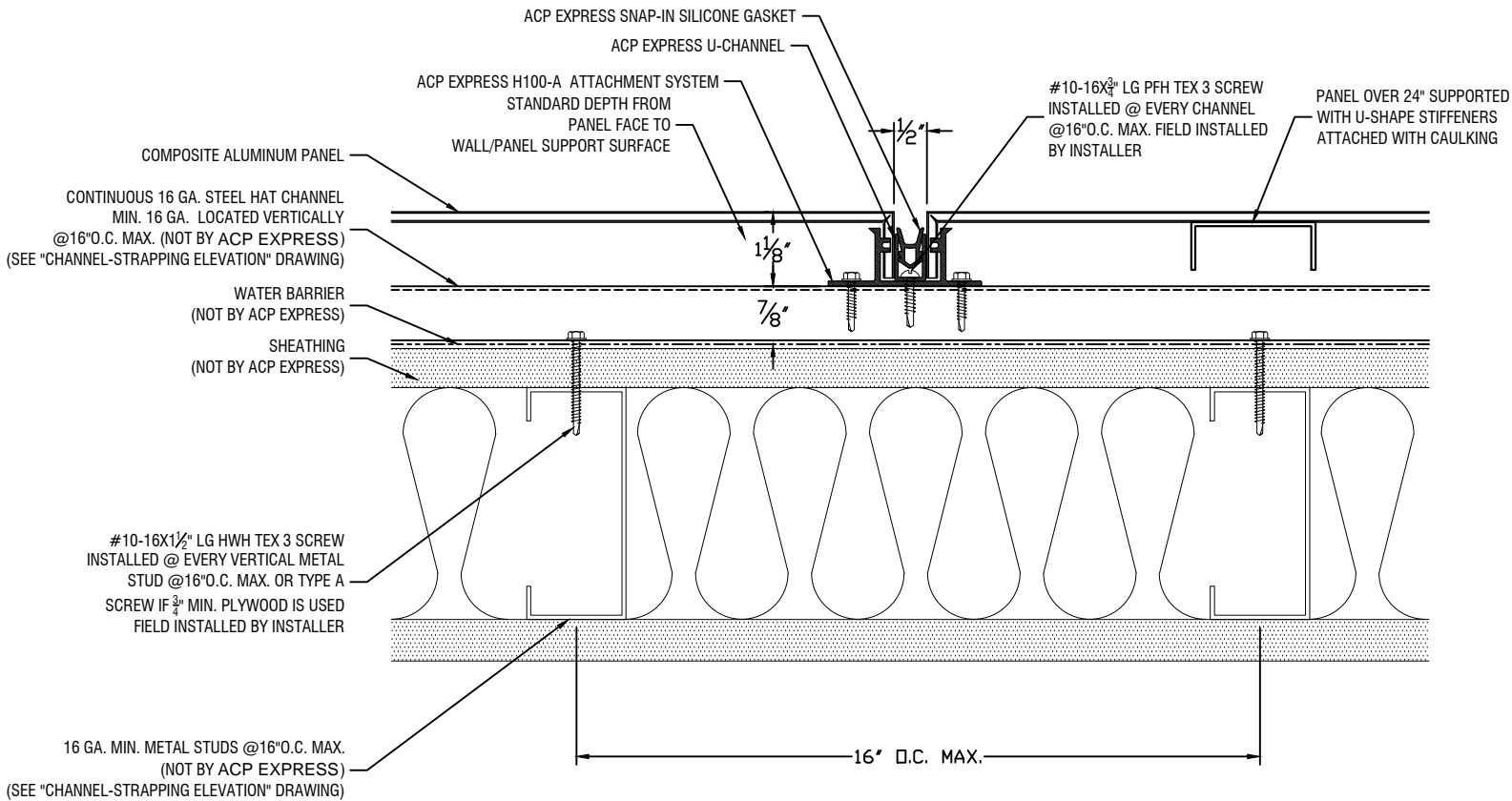
Typical Horizontal Joint Detail



ACP EXPRESS H100-A DRY SEAL SYSTEM (SYSTEM INSTALLED ON CONTINUOUS HAT CHANNEL)

TO PURCHASE ENGINEERED/FABRICATED PANEL SYSTEM, CONTACT ALLIED METAL (888) 520-8800
TO PURCHASE ENGINEERED ACP EXPRESS ATTACHMENT SYSTEM, CONTACT WRISCO (800) 753-9400
Product Patents: 8,925,271, 8,966,849. Patents pending

CONTRACTOR NOTE:
ALL WALLS ARE TO BE PLUMB
& LEVEL. INSTALLER TO USE
NECESSARY SHIMS IF WALLS
ARE NOT PLUMB OR LEVEL.
SHIMS (NOT BY ACP EXPRESS)



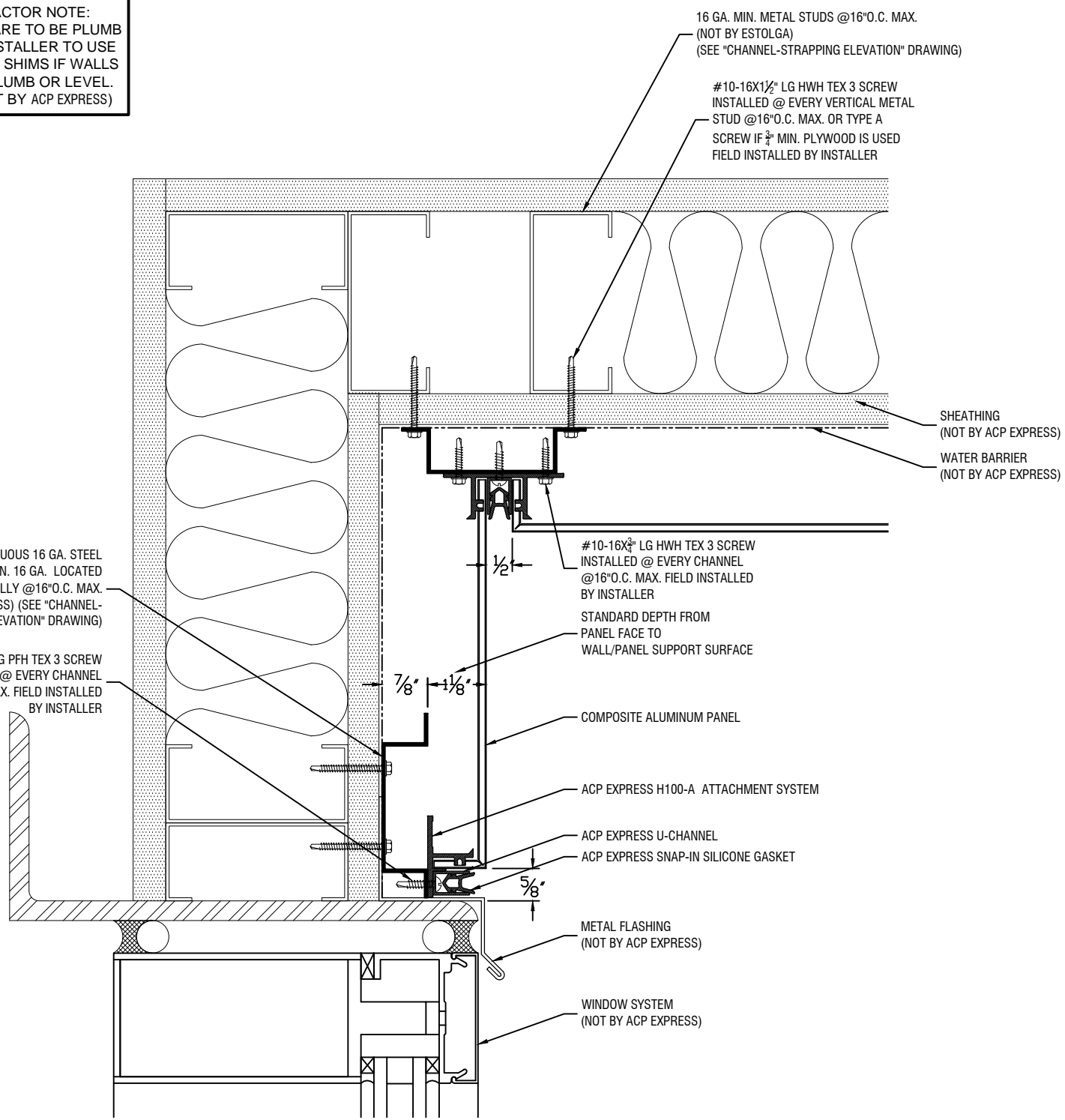
Typical Vertical Joint Detail



ACP EXPRESS H100-A DRY SEAL SYSTEM (SYSTEM INSTALLED ON CONTINUOUS HAT CHANNEL)

TO PURCHASE ENGINEERED/FABRICATED PANEL SYSTEM, CONTACT ALLIED METAL (888) 520-8800
TO PURCHASE ENGINEERED ACP EXPRESS ATTACHMENT SYSTEM, CONTACT WRISCO (800) 753-9400
Product Patents: 8,925,271, 8,966,849. Patents pending

CONTRACTOR NOTE:
ALL WALLS ARE TO BE PLUMB
& LEVEL. INSTALLER TO USE
NECESSARY SHIMS IF WALLS
ARE NOT PLUMB OR LEVEL.
SHIMS (NOT BY ACP EXPRESS)



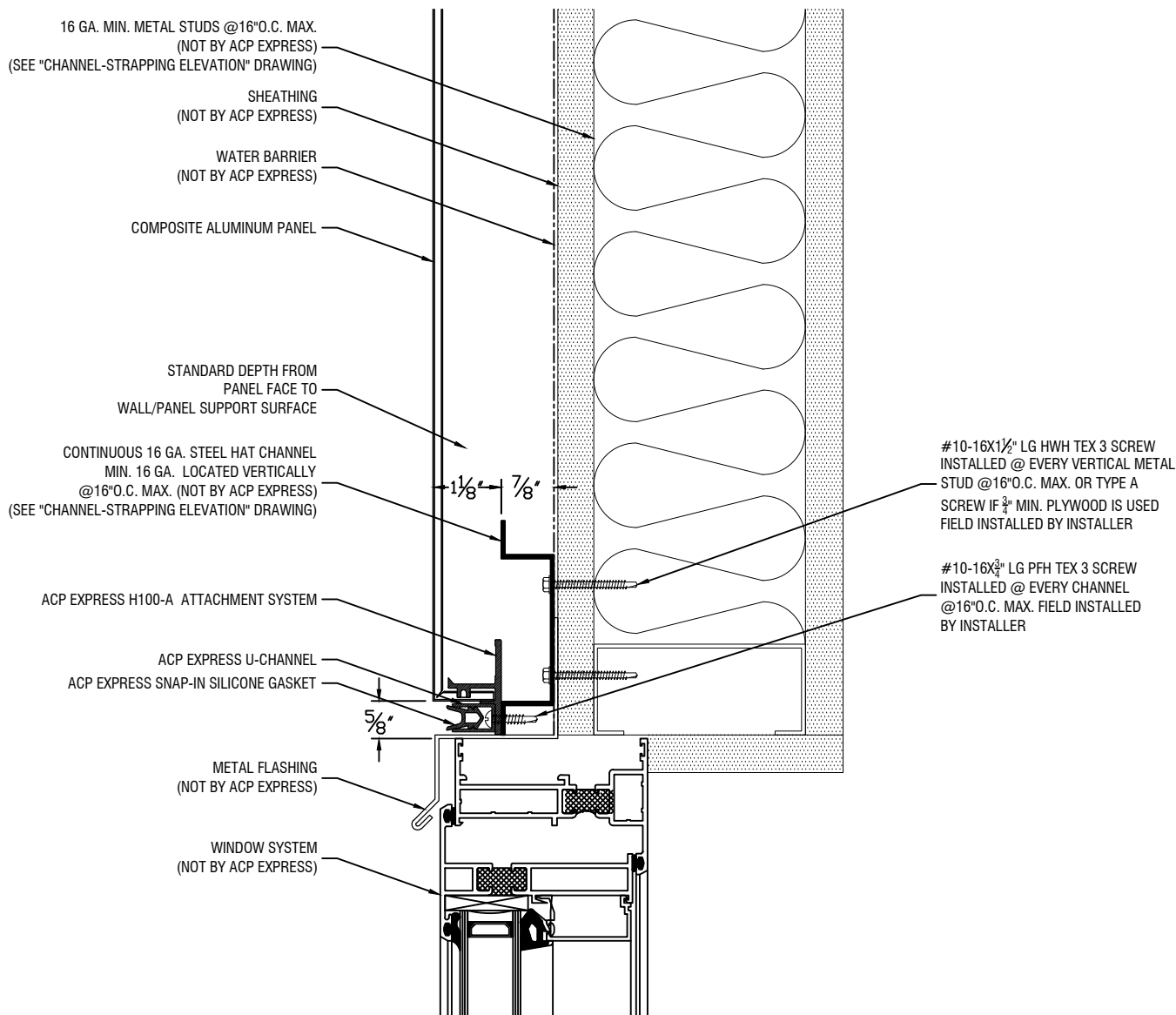
Canopy Detail



ACP EXPRESS H100-A DRY SEAL SYSTEM **(SYSTEM INSTALLED ON CONTINUOUS HAT CHANNEL)**

TO PURCHASE ENGINEERED/FABRICATED PANEL SYSTEM, CONTACT ALLIED METAL (888) 520-8800
TO PURCHASE ENGINEERED ACP EXPRESS ATTACHMENT SYSTEM, CONTACT WRISCO (800) 753-9400
Product Patents: 8,925,271, 8,966,849. Patents pending

CONTRACTOR NOTE:
ALL WALLS ARE TO BE PLUMB
& LEVEL. INSTALLER TO USE
NECESSARY SHIMS IF WALLS
ARE NOT PLUMB OR LEVEL.
SHIMS (NOT BY ACP EXPRESS)



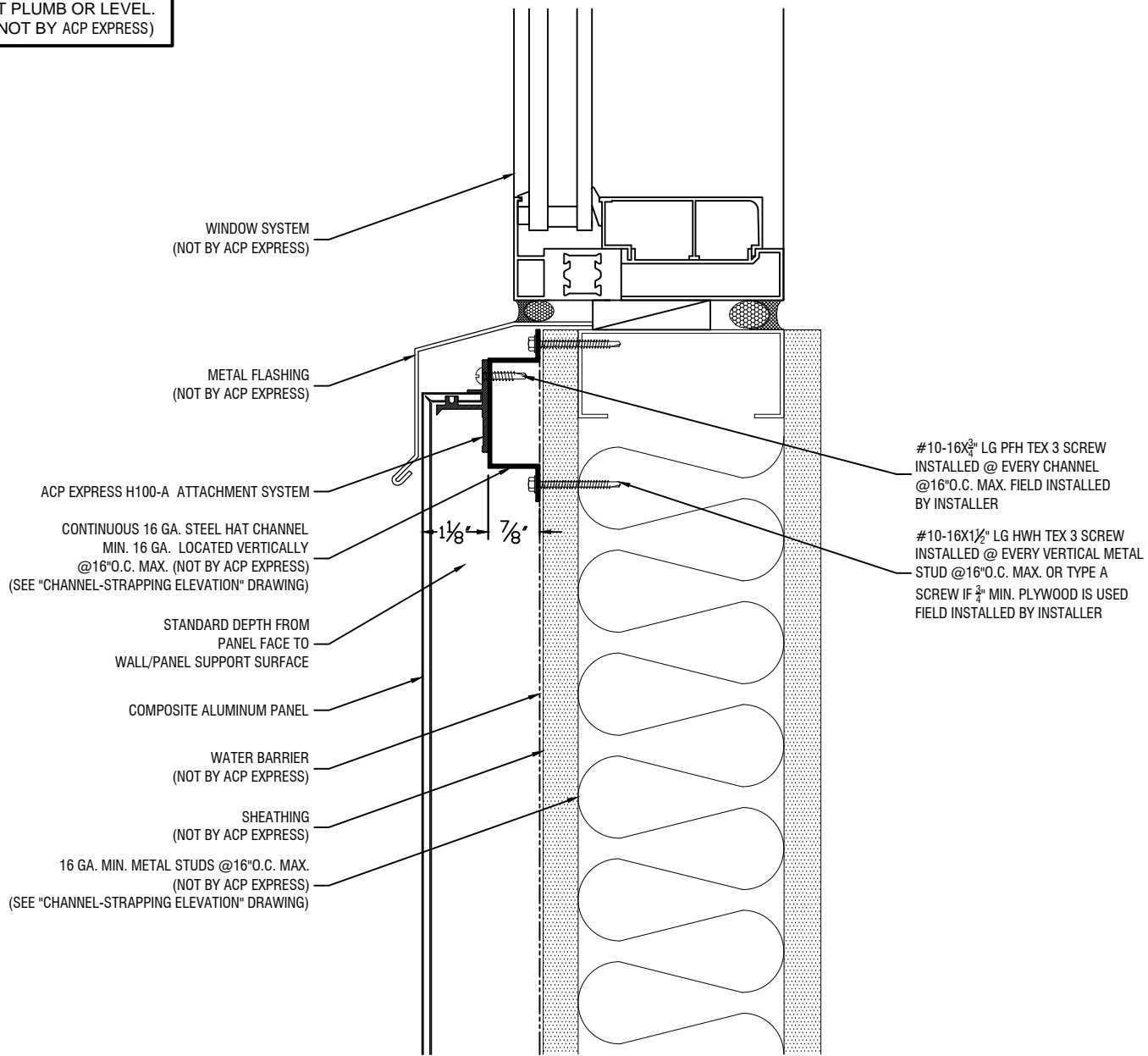
Window Head Detail



ACP EXPRESS H100-A DRY SEAL SYSTEM (SYSTEM INSTALLED ON CONTINUOUS HAT CHANNEL)

TO PURCHASE ENGINEERED/FABRICATED PANEL SYSTEM, CONTACT ALLIED METAL (888) 520-8800
TO PURCHASE ENGINEERED ACP EXPRESS ATTACHMENT SYSTEM, CONTACT WRISCO (800) 753-9400
Product Patents: 8,925,271, 8,966,849. Patents pending

CONTRACTOR NOTE:
ALL WALLS ARE TO BE PLUMB
& LEVEL. INSTALLER TO USE
NECESSARY SHIMS IF WALLS
ARE NOT PLUMB OR LEVEL.
SHIMS (NOT BY ACP EXPRESS)



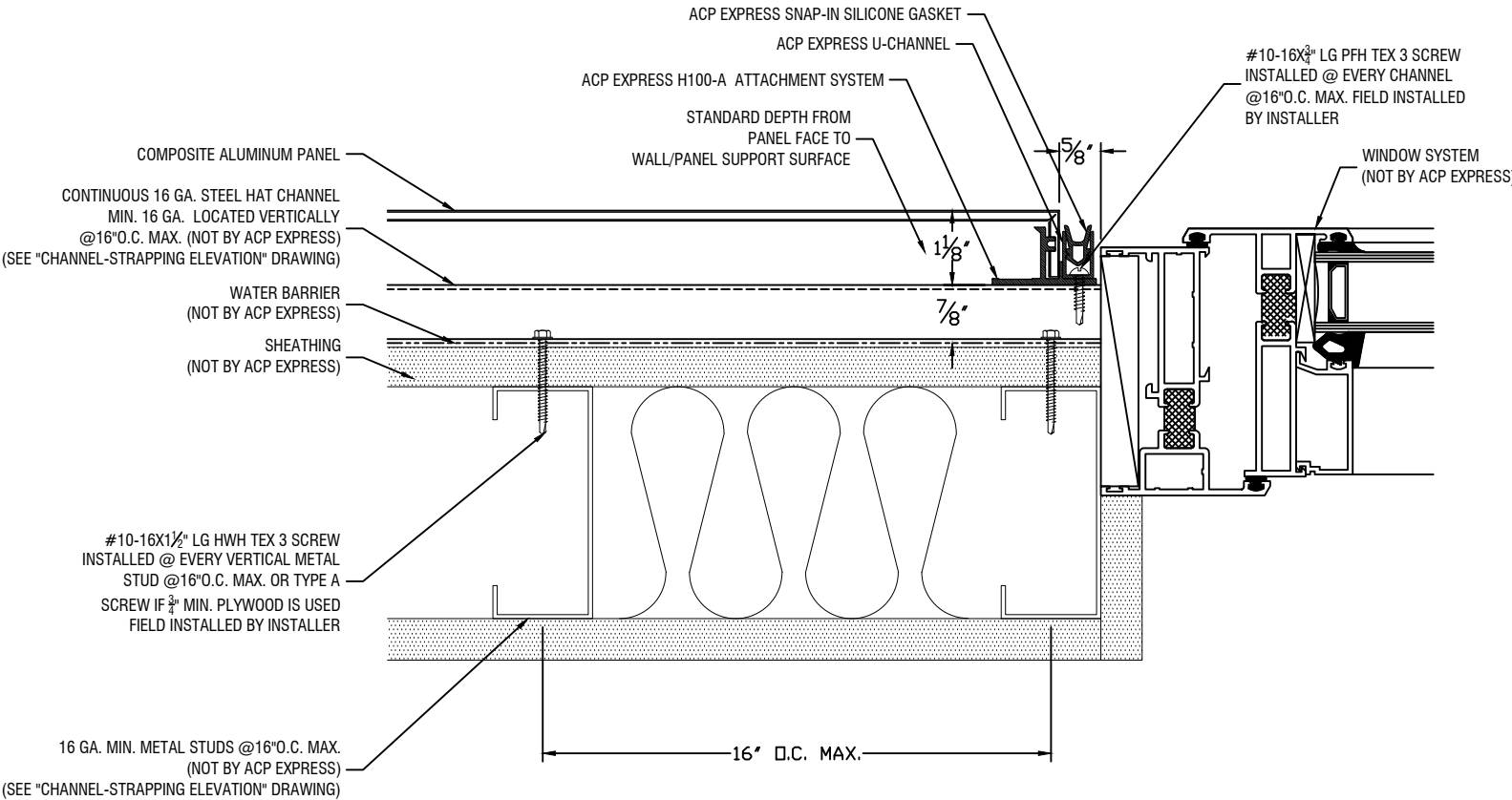
Window Sill Detail



ACP EXPRESS H100-A DRY SEAL SYSTEM
(SYSTEM INSTALLED ON CONTINUOUS HAT CHANNEL)

TO PURCHASE ENGINEERED/FABRICATED PANEL SYSTEM, CONTACT ALLIED METAL (888) 520-8800
TO PURCHASE ENGINEERED ACP EXPRESS ATTACHMENT SYSTEM, CONTACT WRISCO (800) 753-9400
Product Patents: 8.925,271,8,966,849.Patents pending

CONTRACTOR NOTE:
ALL WALLS ARE TO BE PLUMB
& LEVEL. INSTALLER TO USE
NECESSARY SHIMS IF WALLS
ARE NOT PLUMB OR LEVEL.
SHIMS (NOT BY ACP EXPRESS)



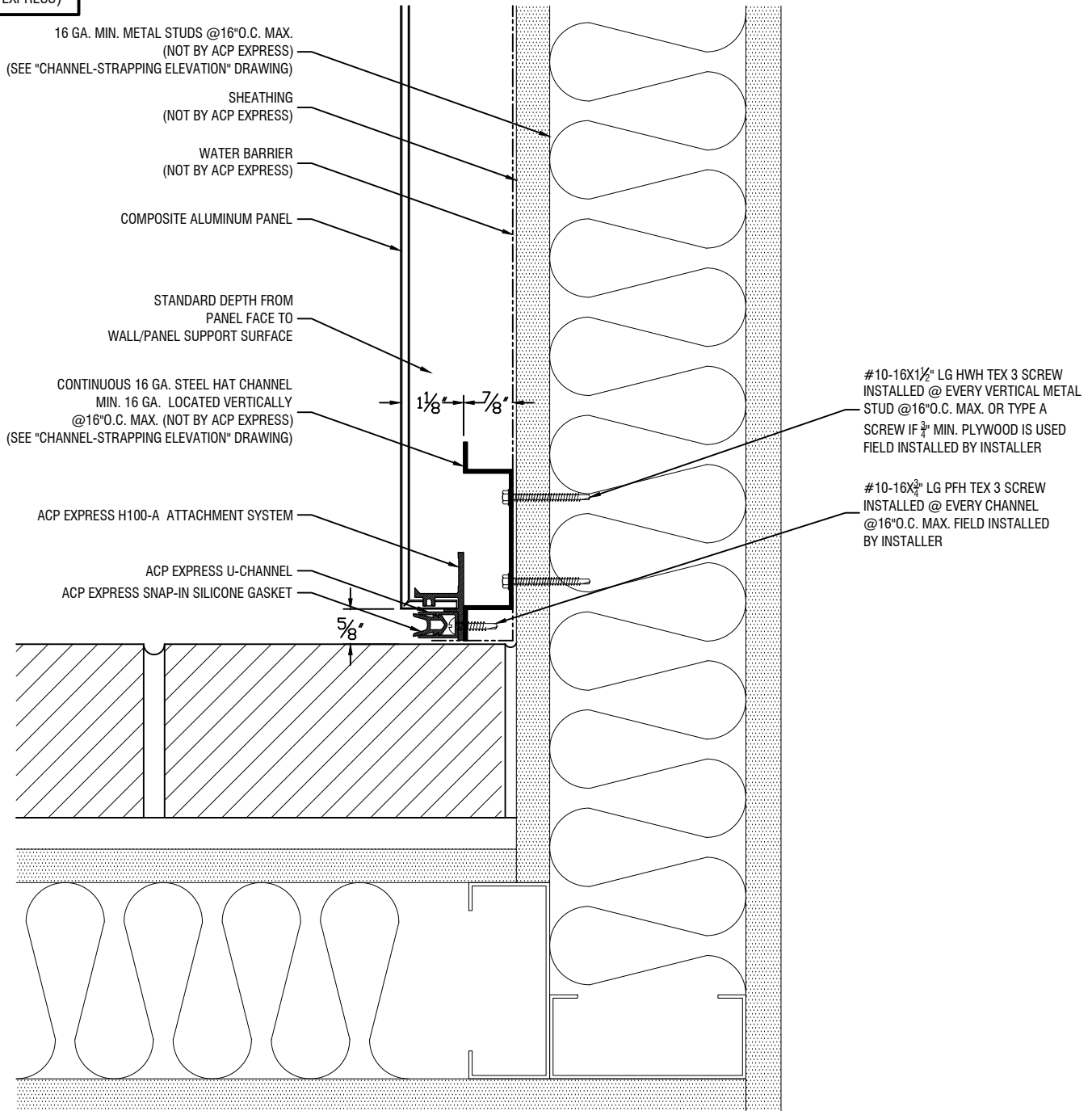
Window Jamb Detail



ACP EXPRESS H100-A DRY SEAL SYSTEM (SYSTEM INSTALLED ON CONTINUOUS HAT CHANNEL)

TO PURCHASE ENGINEERED/FABRICATED PANEL SYSTEM, CONTACT ALLIED METAL (888) 520-8800
TO PURCHASE ENGINEERED ACP EXPRESS ATTACHMENT SYSTEM, CONTACT WRISCO (800) 753-9400
Product Patents: 8,925,271, 8,966,849. Patents pending

CONTRACTOR NOTE:
ALL WALLS ARE TO BE PLUMB
& LEVEL. INSTALLER TO USE
NECESSARY SHIMS IF WALLS
ARE NOT PLUMB OR LEVEL.
SHIMS (NOT BY ACP EXPRESS)



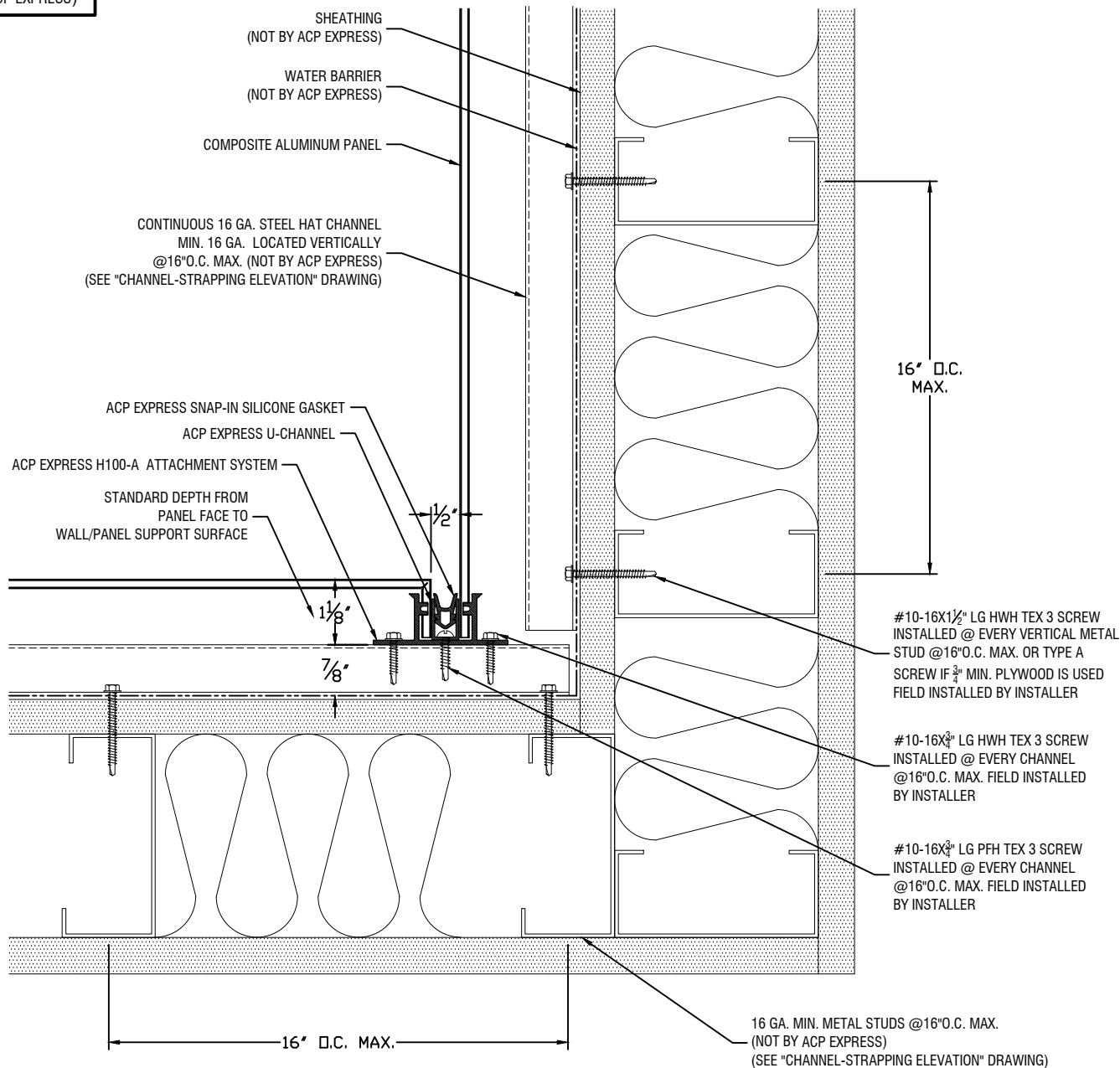
Plan Detail @ Adjacent Wall



ACP EXPRESS H100-A DRY SEAL SYSTEM (SYSTEM INSTALLED ON CONTINUOUS HAT CHANNEL)

TO PURCHASE ENGINEERED/FABRICATED PANEL SYSTEM, CONTACT ALLIED METAL (888) 520-8800
TO PURCHASE ENGINEERED ACP EXPRESS ATTACHMENT SYSTEM, CONTACT WRISCO (800) 753-9400
Product Patents: 8,925,271, 8,966,849. Patents pending

CONTRACTOR NOTE:
ALL WALLS ARE TO BE PLUMB
& LEVEL. INSTALLER TO USE
NECESSARY SHIMS IF WALLS
ARE NOT PLUMB OR LEVEL.
SHIMS (NOT BY ACP EXPRESS)



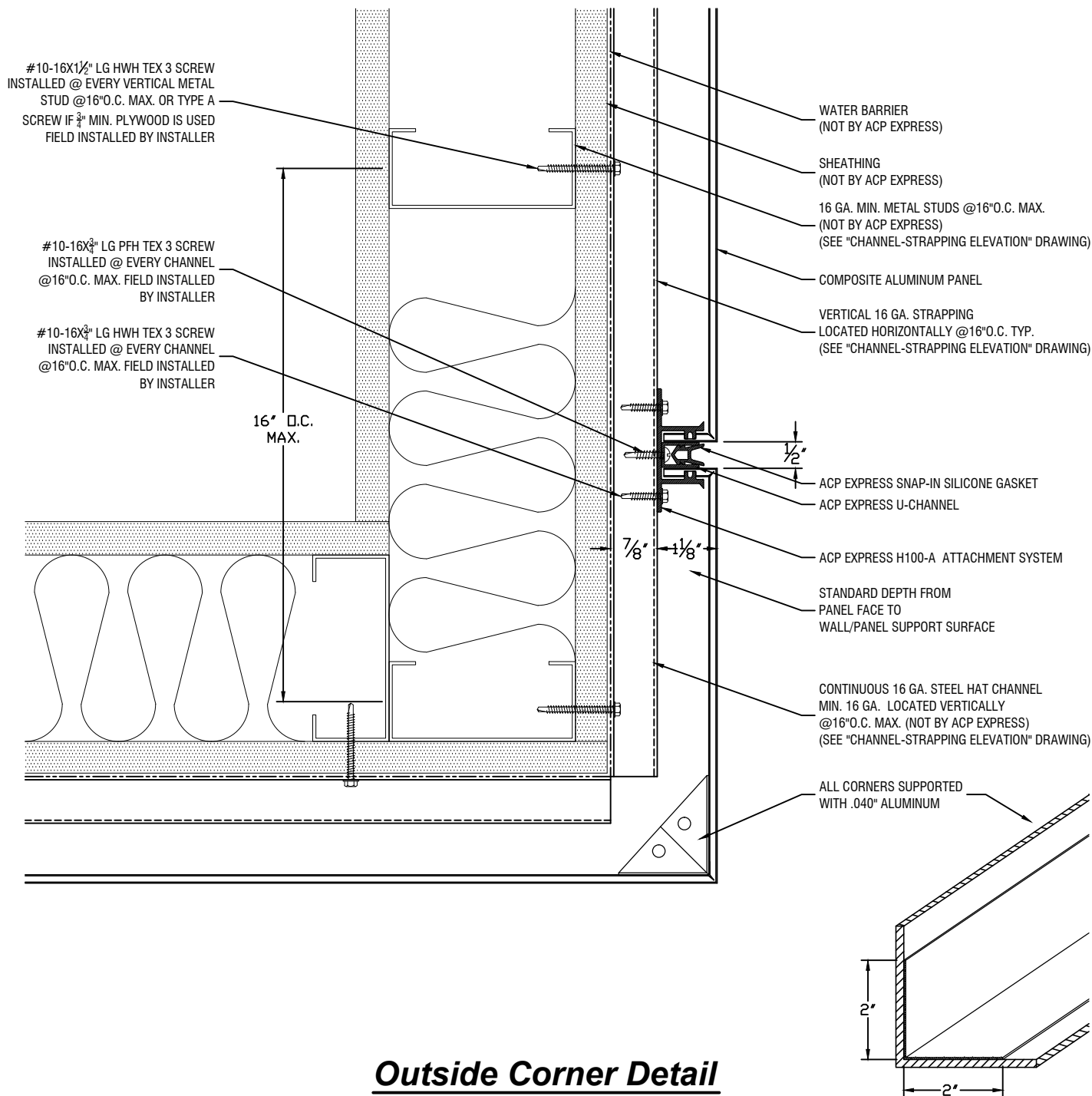
Inside Corner Detail



ACP EXPRESS H100-A DRY SEAL SYSTEM (SYSTEM INSTALLED ON CONTINUOUS HAT CHANNEL)

TO PURCHASE ENGINEERED/FABRICATED PANEL SYSTEM, CONTACT ALLIED METAL (888) 520-8800
TO PURCHASE ENGINEERED ACP EXPRESS ATTACHMENT SYSTEM, CONTACT WRISCO (800) 753-9400
Product Patents: 8,925,271, 8,966,849. Patents pending

CONTRACTOR NOTE:
ALL WALLS ARE TO BE PLUMB
& LEVEL. INSTALLER TO USE
NECESSARY SHIMS IF WALLS
ARE NOT PLUMB OR LEVEL.
SHIMS (NOT BY ACP EXPRESS)



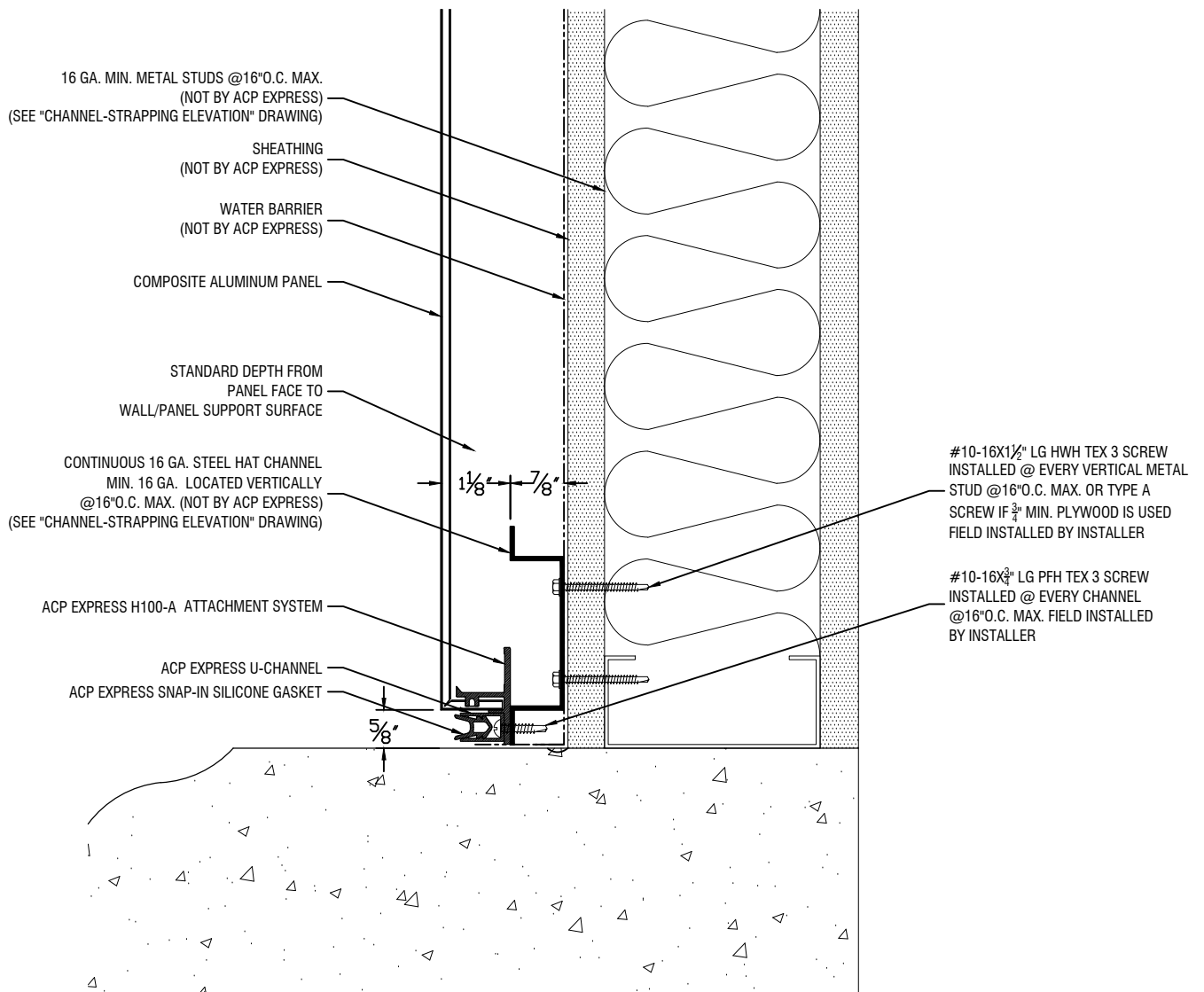
Outside Corner Detail



ACP EXPRESS H100-A DRY SEAL SYSTEM (SYSTEM INSTALLED ON CONTINUOUS HAT CHANNEL)

TO PURCHASE ENGINEERED/FABRICATED PANEL SYSTEM, CONTACT ALLIED METAL (888) 520-8800
TO PURCHASE ENGINEERED ACP EXPRESS ATTACHMENT SYSTEM, CONTACT WRISCO (800) 753-9400
Product Patents: 8,925,271, 8,966,849. Patents pending

CONTRACTOR NOTE:
ALL WALLS ARE TO BE PLUMB
& LEVEL. INSTALLER TO USE
NECESSARY SHIMS IF WALLS
ARE NOT PLUMB OR LEVEL.
SHIMS (NOT BY ACP EXPRESS)



Base Detail



ACP EXPRESS H100-A DRY SEAL SYSTEM (SYSTEM INSTALLED ON CONTINUOUS HAT CHANNEL)

TO PURCHASE ENGINEERED/FABRICATED PANEL SYSTEM, CONTACT ALLIED METAL (888) 520-8800
TO PURCHASE ENGINEERED ACP EXPRESS ATTACHMENT SYSTEM, CONTACT WRISCO (800) 753-9400
Product Patents: 8,925,271, 8,966,849. Patents pending